



# focus

[www.PCIMidwest.org](http://www.PCIMidwest.org)

winter 21

## PRECAST CONCRETE GETS THE WIN!

The Stark Performance Center connects to the existing Bergstrom Football Complex, creating multiple spaces for use by all student-athletes as well establishing a North Endzone Plaza outside of Jack Trice Stadium for all Cyclones to enjoy. Because precast has the unique ability to create nearly any color, finish, or texture, it was used on this project to match the Center's color and finish to existing and separate structures.

### IOWA STATE UNIVERSITY STARK PERFORMANCE CENTER

**General Contractor:** Neumann Brothers Inc. **Architect:** Substance Architecture **Engineer of Record:** Raker Rhodes Engineering

**Precaster:** Wells **Owner:** Iowa State University Athletics **Image Credit:** Nathan Scott Photography



Mike Johnsrud, Executive Director • [info@pcimidwest.org](mailto:info@pcimidwest.org)



# The Gallery Apartments



The Gallery Apartments is a luxury multifamily community, establishing locations in Burnsville, Eagan, and Saint Paul, MN. Each unit features an inclusive list of amenities, including an open floor plan, gourmet kitchen, and granite countertops. To complete the projects on schedule, project leaders sought durable construction materials that could be manufactured with short lead times. Precast concrete

hollowcore was specified for the structures' podiums for its unmatched efficiency and structural benefits.

County Materials utilized its enhanced production capacity to manufacture 126,200 square feet of hollowcore planks, 1,800 square feet of solid slabs, and 6,200 linear feet of columns and beams. During production, each component was cut to

specification, ensuring its ready installation upon delivery. The inherent efficiency of hollowcore met the demands of the construction schedule and allowed the three podiums to be installed consecutively.

Precast concrete hollowcore is ideal for residential applications, as it offers high-performance strength and fire ratings up to three hours. The prestressed planks support high load capacities across long, column-free spans, maximizing usable space and providing a reliable foundation for the residential structure above. Hollowcore maintains comfortable indoor temperatures and resists mold to provide a safe, comfortable environment for occupants.

Architect: **Kaas Wilson Architects**  
Engineer: **Hanuschak Consultants**  
Contractor: **Stonebridge Companies**  
Owner: **Chase Real Estate, Inc.**  
Precaster: **County Materials Corporation**  
PCI Certified Erector: **Zachman Precast**  
Locations: **Burnsville, Eagan, and Saint Paul MN**  
Year of Completion: **2021**

  
**COUNTY**  
MATERIALS CORPORATION  
[www.countymaterials.com](http://www.countymaterials.com)





# Kirk Family YMCA Lyric



The 62,000 square foot urban fitness center is an adaptive reuse project in downtown that transformed the historic theater into an urban health and fitness center. Originally constructed in 1926, the historic Lyric theater is located along a corridor which includes several sites listed on the Historic Cities' Register.

Maintaining the iconic facade on the south elevation on the original structure was a priority. The wide aesthetic versatility of the project made architectural and structural precast concrete the perfect material to use to achieve these goals.

Structural precast concrete components were used to build out the footprint of the new building. Enterprise Precast Concrete produced structural gray precast concrete panels that were installed on the west elevation and then faced with natural stone to maintain consistency with the original south facade. Structural precast concrete hollowcore, column and beam components produced by Molin Concrete Products were used to build out the interior footprint of the building.

Enterprise Precast Concrete also provided precast walls for the newer north and east elevations, which were designed with a modern façade, creating a complementary unique blend of old and new. This was achieved using 18,106 square feet of white and charcoal integral colored architectural precast concrete cladding and insulated precast concrete panels with an acid etch finish. These components are highlighted by a distinguishing series of

protruding architectural precast fins.

Architectural precast concrete provided the desired material continuity between the new and existing buildings. The addition needed to be genuine to new construction techniques but remain harmonious with the historic facades. The articulation of the custom formed panels allowed for modern interpretations of the historical cornice, entablature, and colonnade.

Architect: **BNIM Architects**  
Engineer: **Structural Engineering Associates**  
Owner: **YMCA of Greater Kansas City**  
Contractor: **JE Dunn Construction**  
Precaster (Architectural): **Enterprise Precast Concrete**  
Precaster (Structural): **Molin Concrete Products**  
PCI-Certified Erector: **JE Dunn Construction**  
Location: **Kansas City, MO**  
Photography: **Jacia Phillips | Arch Photo KC**  
Year of Completion: **2021**



[www.enterpriseprecast.com](http://www.enterpriseprecast.com)



Since 1897  
CONCRETE PRODUCTS COMPANY

[www.molin.com](http://www.molin.com)





# Nokomis Mixed-Use Development



Nokomis offers a mix of 130 studio, alcove, and one and two-bedroom apartments along with a 24,000 square foot supermarket that occupies the ground floor retail space. Residents have access to climate-controlled parking, business center, sky lounge, fitness center, and more.

Precast concrete's durability, low maintenance characteristics, energy efficiency, and fast erection schedule made it the perfect choice for this project. Insulated architectural precast concrete wall panels with inlayed thin brick were used to enhance the luxury building design by highlighting different textures and visual nuances.



Taracon Precast and Wyan Precast Services manufactured, delivered, and installed almost 98,000 square feet of precast concrete hollow core, over 45,000 square feet of precast concrete insulated architectural wall panels and solid wall panels, 130 inverted tee beams, and 196 columns, completing the project on time and on budget. The team worked collaboratively to design and construct a luxury multi-use building that is both functional and visually appealing.

Architect: **ESG Architects Inc**

Engineer: **Midwest Structure Engineering Inc.**

Contractor: **Stevens Construction Corp**

Precaster: **Taracon Precast**

Precast Specialty Engineer: **Midwest Structure Engineering Inc.**

PCI Certified Erector: **Wyan Precast Services**

Location: **Minneapolis, MN**

Year of Completion: **2021**



[www.taraconprecast.com](http://www.taraconprecast.com)



# Jefferson High School



Gage Brothers produced nearly 107,000 square feet of precast concrete for the construction of Jefferson High School. Precast concrete became the clear solution when solving the building's needs for clear span capability, speed of construction, aesthetic versatility, and most important – the ability to serve as a storm shelter to the 1,400 students it will accommodate.

Architectural cladding and insulated wall panels span both the performance center and gymnasium of the school. These spaces provide a safe and modern place for students to hone their skills and achieve greatness.

Natural lighting is a common theme throughout the building design. Expansive windows in the gymnasium flood the space with light. Two depths of sandblasting create visual frames around the windows which showcases the flexibility of using the same concrete mix to easily create multiple finishes.

Slight variations in mix design also provided a subtle, multi-dimensional visual effect. Gorgeous thin brick offsets the sandblasted cladding on the performance center by creating a contrast deserving of a standing ovation. This combination reinforces the modern aesthetic that compliments the open-floorplan and enhanced use of technology within the facility.

Architect: **Architecture Incorporated**  
Engineer: **Structural Engineering Associates**  
Contractor: **Journey Group Construction**  
Owner: **Sioux Falls School District**  
Precaster: **Gage Brothers Concrete Products, Inc.**  
Precast Specialty Engineer: **Jharna Pokhrel, Collin Moriarty**  
PCI Certified Erector: **Journey Group Construction**  
Thin Brick Manufacturer: **Endicott Thin Brick & Tile**  
Photo Credits: **Brian Rotert (Cipher Imaging)**  
Location: **Sioux Falls, SD**  
Year of Completion: **2021**

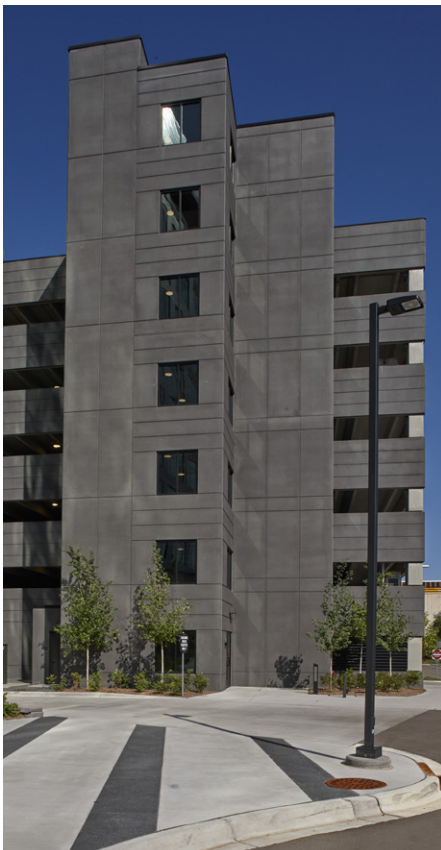
**Gage**  
Brothers

[www.gagebrothers.com](http://www.gagebrothers.com)





# 10 West Office and Parking Structure



Wells manufactured and installed more than 400,000 square feet of precast concrete building solution for 10 the West Office and Parking Structure. This new 11-story, 343,000-square-foot Class A office and parking complex and includes approximately 5,000 square feet of shared outdoor amenity space, 3,500 square feet of retail space on the ground level, a fitness facility, public locker rooms and an indoor bike room with access to and from the linear park space. The design of the building marries brick and glass, providing a modern take on the durability of a brick warehouse building.

The office tower is oriented along the east/west axis of the northern edge of the property. A glass vertical element is intentionally located off-center on the building to allow for a dramatic lobby connecting the plaza to the park, while maintaining a centered vertical circulation core. It also creates a direct relationship with a future building to the south.

The exterior materials on the office tower are a marriage of brick and glass, with architectural precast spandrels linking glass elements on every other floor. Precast concrete thin brick arches and a deeper brick expression softens the base, adding character to the pedestrian experience.

The 1,214-stall parking structure is a three-bay design with vertical vehicular circulation occurring in the center bay. The façades on all four sides are flat and clad with integral colored architectural precast.

Architect: **Ryan A+E Inc.**

Engineer: **Ericksen Roed & Associates, Inc.**

Contractor: **Ryan Companies US, Inc.**

Owner: **Excelsior Group**

Precaster: **Wells**

PCI Certified Erector: **Wells**

Location: **St. Louis Park, MN**

Year of Completion: **2021**



[www.wellsconcrete.com](http://www.wellsconcrete.com)



# Riverwalk City Downtown Apartments



The Riverwalk City Downtown Apartments is a multi-family residential project that was completed in late 2018. The five-story apartment building houses 152 market-rate dwelling units, 174 above and below grade enclosed parking stalls, associated common areas, and a second-floor deck and outdoor pool.

Precast concrete was the perfect choice for the project due to its ability to accommodate site logistics, overcome harsh winter construction conditions, and provide fire-resistant qualities. The Molin Concrete Products Company sales and design team were involved early in the budget and bid process to ensure that the proper budget, precast concrete design, and schedule were included in the proposal for the owner and general contractor.

3,100 square feet of solid slab plank for the project. In addition, 4,349 square feet of non-insulated precast concrete wall panels, 2,933 lineal feet of prestressed concrete beams, and 1,828 lineal feet of precast concrete columns were produced by Molin for use in the project's construction.

Architect: **Momentum Design Group, LLC**  
Engineer: **Ericksen Roed & Associates**  
Contractor: **Weis Builders - Rochester**  
Precaster: **Molin Concrete Products Company**  
PCI Certified Erector: **Molin Concrete Products Company**  
Location: **Rochester, MN**  
Year of Completion: **2018**



In total, Molin Concrete Products Company supplied nearly 74,000 square feet of hollow core plank and almost



Since 1897  
CONCRETE PRODUCTS COMPANY

[www.molin.com](http://www.molin.com)



# Adams Central Elementary School



This new 83,000 square foot elementary school serves all the district's students in kindergarten thru sixth grade. The facility includes small classrooms complimented with large collaboration zones for each of the grades. The kindergarten pod is comprised of four classrooms, and it also serves as the FEMA-rated storm shelter for the school. The facility provides a Media Center and a large competition gymnasium to host Junior/Senior High School athletic events.

The project's overall schedule was extremely tight, and the design team knew they needed to get a precaster on

board to provide design assistance to finish construction documents and reserve a bed spot in the production schedule. This decision enabled Enterprise Precast Concrete, Inc. to get started on shop drawings while the General Contractor was bidding the project. Overall, the early selection of Enterprise Precast Concrete, Inc. shortened the construction schedule and still allowed the project to be hard bid.

The exterior of the building incorporates a variety of finishes and materials to support the agricultural-themed design concept. The use of multiple finishes and thin brick

patterns create an abstract version of the rich agricultural lands viewed from overhead. The brick parquet patterns are intended to reflect land use and the stacked bond to reflect planted row crops. The voids of acid etched, and exposed aggregate precast concrete are intended to represent the farmer's access to fields. The final product is a facility rich in color and texture.

Precast concrete provided a complete exterior wall envelope system that could be installed by a small team of erectors and eliminated the need for a multiple number of other trades typically needed to construct a brick veneer wall system. It also compressed the construction timeframe needed to complete the exterior walls of the school and eliminated the need for any temporary weather protection.



Architect: **DLR Group**  
Engineer: **DLR Group**  
Contractor: **Hampton Construction**  
Thin Brick Manufacturer: **Endicott Thin Brick & Tile**  
Precaster: **Enterprise Precast Concrete, Inc.**  
Location: **Hastings, NE**  
Photography: **Jacia Phillips | Arch Photo KC**  
Year of Completion: **2018**



[www.enterpriseprecast.com](http://www.enterpriseprecast.com)



# Central Community College Center for Science and Technology



This two-phase project incorporates 22,800 square feet of new construction with 23,800 square feet of renovations to create a hands-on learning environment for nursing, biology, and chemistry. The structure features nursing program lab spaces, renovated classrooms and faculty areas, hospital bed dockers, and simulation environments for realistic work experience. In addition to the new building and remodeling of the east wing, Central Community College will also be adding a courtyard and walkway.

Coreslab Structures (OMAHA) Inc. manufactured 63 insulated wall panels for the first phase of the project. The panels feature Endicott thin brick with a mix of 70% Iron Spot 46 and 30% Iron Spot 77 Velour. The use of integrally colored precast

and thin brick enabled the project to adhere to standards set by the college and match other campus buildings.

Coreslab Structures (OMAHA) Inc. also manufactured six monument sign pieces for the project.

Architect: **Wilkins Architecture**  
Engineer: **Lange Structural Group**  
Contractor: **Hausmann Construction**  
Owner: **Central Community College**  
Precaster: **Coreslab Structures (OMAHA) Inc.**  
Precast Specialty Engineer: **eConstruct**  
Thin Brick Supplier: **Endicott Thin Brick & Tile**  
Location: **Columbus, NE**  
Year of Completion: **2021**



[www.coreslab.com](http://www.coreslab.com)





# Associate Members

## **Abrasives Inc.**

4090 Hwy 49  
Glen Ullin, ND 58631  
Russell Raad - 701-348-3610

## **Advanced Concrete Technologies**

300 Portsmouth Avenue  
Greenland, NH 03840  
603-431-5661  
www.concretebiz.com  
Charles Watkins  
cwatkins@concretebiz.com  
Kurt Oakman  
koakman@concretebiz.com

## **Afinitas**

www.spillmanform.com  
Kyle Hignett  
kyle.hignett@nhmfcorp.com  
Reed Finch  
reed.finch@hpct.com

## **ALP Supply**

300 Ben Fairless Drive  
Fairless Hills, PA 19030  
www.alpsupply.com  
800.332.7090  
Mark Ronning – 215-359-7279  
mronning@alpsupply.com

## **Architectural Polymers, Inc.,**

1220 Little Gap Road  
Palmerton, PA 18071  
610-824-3322  
www.apformliner.com  
Marshall Walters  
marshall@apformliner.com

## **Ash Grove Cement**

1101 Cody Street  
Overland Park, KS 66210  
Dave Suchorski 913-205-8146  
dave.suchorski@ashgrove.com  
Steve Wobken 888-334-1401  
steve.wobken@ashgrove.com

## **Athamor Steel**

2550 Gray Falls Drive, Suite 216  
Houston, TX 77077  
www.athamorsteel.com  
281-741-1265  
Patrick Gregoire – 713-291-7760  
pgregoire@athamorsteel.com

## **Beton-Stahl, Inc.**

800 Wilson Ave #206  
Menomonie, WI 54751  
715-231-2040  
www.beton-stahl.com  
Corey Leith  
info@beton-stahl.com

## **Bob's Sparkle Wash**

1135 114th Lane NW  
Coon Rapids, MN 55448  
763-225-6500  
www.sparklewash.com/centralmn/  
Scott Walters – 763-225-6211

## **Carl Harris Co, Inc**

1245 S Santa Fe  
Wichita, KS 67211  
Carl Harris - 316-267-8700

## **Cheesebrough Brokerage Inc.**

448 Lilac Street  
Lino Lakes, MN 55014  
Patrick Cheesebrough – 651-717-6060

## **Commercial Metals Company**

1 Steel Mill Drive  
Seguin, TX 78155  
www.cmc.com  
830-372-8284  
Jon Kinnischtke - 719-240-0514  
jon.kinnischtke@cmc.com  
Zach Honeyman - 813-514-5217  
zachary.honeyman@cmc.com

## **CONAC**

4475 River Green Pkwy, Suite 100  
Duluth, GA 30096  
www.conacweb.com  
800-336-2598  
Farid Sadri – 800-336-2598  
fsadri@conacweb.com  
Tony Chinn – 770-212-1575  
tchinn@conacweb.com

## **Continental Cement**

www.continentalcement.com  
Contact: Dave Meyer: 612-889-5236

## **Cresset Chemical Company**

13255 Main Street, Box 367  
Weston, OH 43569  
800-367-2020  
www.cresset.com  
Jim Renda - 419-669-2041  
jim@cresset.com  
Tauna Prince – 702-755-0999  
Tauna@Cresset.com

## **Dayton Superior**

1125 Byers Road  
Miamisburg, OH 45342  
www.daytonsuperior.com  
Adam Stenberg – 612-364-4158  
adamstenberg@daytonsuperior.com

## **DRL Drafting and Design**

1608 Commercial Blvd  
Chippewa Falls, WI 54728  
715-726-9656 - www.DRLDD.com  
Don Loew 715-598-0571  
don@drldd.com

## **e.Construct.USA, LLC**

11823 Arbor Street, Suite 200  
Omaha, NE 68144  
www.econstruct.us  
402-884-9998  
Bradley Schipper - 402-680-5709  
brad.schipper@econstruct.us  
Alec Stubbe - 402-314-1893  
alec.stubbe@econstruct.us

## **Egan Company**

11611 Business Park Blvd N  
Champlin, MN 55316  
763-595-4361  
https://Intellibatch.eganco.com  
Don Weirens - djw3@eganco.com  
Wayne Bauernschmitt - ww@eganco.com

## **Elematic Inc**

19745 Sommer Drive Suite A  
Brookfield, WI 53045  
www.elematic.com  
262-798-9777  
Matt Cherba - 262-798-9777  
matt.cherba@elematic-inc.com  
Tracy Wallner - 262-798-9777  
tracy.wallner@elematic-inc.com

## **Endicott Thin Brick & Tile LLC**

PO Box 645  
Fairbury, NE 68352  
www.endicott.com  
Rep: Dean Schmidt 402-729-3315

## **Fister Quarries Group / Fister Chemicals and Accessories Group**

1150 Lyon Road  
Batavia, IL 60510  
www.fisterinc.com  
www.fisterquarries.com  
800-542-7393  
800-339-9534  
Chris Fister – 630-333-6557  
cfister@fisterquarries.com  
David Whelan – 630-333-6555  
david@fisterquarries.com

## **Fitzgerald Formliners**

1500 E Chestnut Ave  
Santa Ana, CA 92701  
www.formliners.com  
Edward Fitzgerald - 714-547-6710  
Becky Stopnik - 714-493-5322  
bstopnik@formliners.com



# Associate Members

## **GCC of America**

600 S Cherry St. #1000  
Glendale, CO 80246  
www.gccusa.com  
Chuck Cox - ccox@gcc.com  
Scott Ruby - sruby@gcc.com

## **GCP Applied Technologies**

Aaron Kjolhede 515-306-1793  
aaron.kjolhede@gcpat.com  
Tyler DuBord 651-247-8927  
tyler.dubord@gcpat.com  
www.gcpat.com

## **General Shale Brick Inc.**

1845 West Dartmouth Ave.  
Denver, CO 80110  
www.generalshale.com  
Jeff Franich - 303-358-1257  
jeff.franich@generalshale.com

## **Hamilton Form Company**

7009 Midway  
Fort Worth, TX 76118  
www.hamiltonform.com  
817-590-2111  
sales@hamiltonform.com

## **Hayden-Murphy Equipment Co, Inc.**

9301 E Bloomington Fwy  
Minneapolis, MN 55420  
www.hayden-murphy.com  
Len Kirk - 952-884-2301

## **Heyer Engineering, Inc.**

4180 24th Avenue S  
Fargo, ND 58104  
701-280-0949  
www.heyereengineering.com  
Eric Greiff, PE

## **IconX LLC**

13904 Lucille Street  
Overland Park Kansas. 66221  
913-208-4274  
Joel Foderberg  
Joel@iconxusa.com  
Davis Foderberg  
Davis@iconxusa.com

## **Insteel Wire Products**

1373 Boggs Dr  
Mt. Airy, NC 27030  
www.insteel.com  
800-334-9504  
Rep: Randy Plitt - rplitt@insteel.com

## **Iowa Steel & Wire Company**

1500 W Van Buren, PO Box 156,  
Centerville, IA 52544  
www.okbrandwire.com  
800-325-5118  
Troy Selvy - 641-954-4603  
tselvy@okbrand.com

## **JVI Inc.**

7131 N. Ridgeway  
Lincolnwood, IL 60712  
www.jvi-inc.com  
800-742-8127  
Todd Adams – 773-251-6344  
todd@jvi-inc.com

## **Lehigh Cement**

12300 Dupont Avenue South  
Burnsville, MN 55337  
www.lehighcement.com  
Chad Hanson – 952-412-6932

## **MAPEI Corporation**

1144 E Newport Center Dr  
Deerfield Beach, FL 33442  
888-876-2834  
www.mapei.com

## **Masonry & Precast Specialty Services**

726 N Frontier Rd  
Papillion, NE 68046  
www.masonryprecast.com  
402-306-6004  
Craig Christensen

## **Metro Brick Inc.**

3314 Winpark Drive  
Crystal MN 55427  
Office (952) 417-0200  
Fax (952) 417-0204  
www.metrobrickinc.com

## **METROBRICK**

1201 Millerton Street SE  
Canton, OH 44707  
www.metrothinbrick.com  
Dianne Young - 888-325-3945  
dyoung@ironrock.com  
Rob Schrock - 616-888-0066  
rschrock@ironrock.com

## **Midwest Industrial Supply, Inc.**

1101 3rd Street SE  
Canton, OH 44707  
330-456-3121  
www.midwestind.com  
Joe Ricca - joe.ricca@midwestind.com

## **Nox-Crete, Inc.**

1444 S 20th Street  
Omaha, NE 68108  
www.nox-crete.com  
402-341-2080  
Patrick Linn – 402-578-2970  
plinn@nox-crete.com  
Stephen Linn – 402-850-9523  
slinn@nox-crete.com

## **nVent LENTON**

34600 Solon Road  
Solon, OH 44139  
800-753-9221  
www.erico.com  
Manuel Conde - 216-347-6594  
manuel.conde@nvent.com  
Anirudha Vaidya – 216-401-9051  
anirudha.vaidya@nVent.com  
**Reigstad Engineers, Inc.**  
192 W 9th St  
St Paul, MN 55102  
651-292-1123  
www.reigstand.com

## **Sandman Structural Engineers**

1587 30th Avenue South  
Moorhead, MN 56560  
218-227-0022  
www.sandmanse.com  
Kurt Sandman, PE

## **Shuttlelift**

49 E Yew Street  
Sturgeon Bay, WI 54235  
www.shuttlelift.com  
920-743-8650

## **Sika Corporation**

1515 Titanium Drive  
Ottawa, IL 61350  
www.usa.sika.com  
Andy Pearson - 920-655-7600  
pearson.andy@us.sika.com

## **Simem America Inc.**

12100 Crown Point, Suite 100  
San Antonio, TX 78233  
www.simemamerica.com  
Jay Newton - 210-568-9987  
jay.newton@simemamerica.com  
Paul Haley – 603-781-0295  
paul.haley@simemamerica.com

## **SKAKO Concrete, Inc.**

7985 Dunbrook Rd, Suite F  
San Diego, CA 92126  
www.skako.com  
John Leszczynski - 852-271-7341



# Associate Members

## **Splice Sleeve North America, Inc.**

38777 W Six Mile Rd #205  
Livonia, MI 48152  
www.splicesleeve.com  
877-880-3230  
AJ Ishikawa aishikawa@splicesleeve.com

## **Standley Batch Systems, Inc.**

505 Aquamsi Street  
Cape Girardeau, MO 63703  
800-325-8084  
www.StandleyBatch.com  
Jim Mantz – jim@standleybatch.com

## **Sumiden Wire Products Corp.**

710 Marshall Stuart Drive,  
Dickson, TN 37055  
www.sumidenwire.com  
Matt Speedy - 614-537-5988

## **Sylvan Products, LLC**

7400 SW Cherry Drive  
Portland, OR 97223  
503-639-9000  
www.sylvan-products.com  
Bryan White – 971-250-1672  
bwhite@sylvan-products.com

## **UltraSpan Technologies**

165 Fennell Street  
Winnipeg, MB R3T 0M6  
204-992-3200  
www.ultraspan.ca  
Adam Formuziewich - 204-292-3666  
adamf@ultraspan.ca

## **US Formliner**

370 Commerce Blvd  
Athens, GA 30606  
www.usformliner.com  
Ray Clark - 706-549-6787

## **West Central Steel, Inc.**

105 19th Street NW  
Willmar, MN 56279  
www.wcsteel.com  
320-235-4070  
Jeff Allinder - 320-214-5228  
jallinder@wcsteel.com

## **Wysan Precast Services LLC**

6189 170th Street North  
Hawley, MN 56549  
218-486-5100  
www.wysanprecastservices.com  
Paul Nelson – 507-380-9423

If you are a PCI Associate Member and need to update your listing or if your company is interested in becoming a PCI Associate Member, please contact Mike Johnsrud at [mike@pcimidwest.org](mailto:mike@pcimidwest.org).

**NEED HELP  
PUTTING  
THE PIECES  
TOGETHER?**

**Let PCI Midwest and its  
members help you with all of  
your precast concrete needs.**



[www.pcimidwest.org](http://www.pcimidwest.org)



# Producer Members

**Key:**

**Architectural  
Structural**

**Bridge – Transportation**

	Architectural Precast	Architectural Trim	Beams/Columns	Wall Panels	Poles	Hollow-core Slabs	Single Tees	Double Tees	Stadium Seats	Modular Cells	Soundwalls	Piles	Boxed Beams/Slabs	I Beams/Girders
<b>Advanced Precast Co.</b> (Mike Decker) Dyersville, IA, 563-875-2615 • www.advancedprecastcompany.com	•			•		•	•							
<b>Collins Precast, LLC</b> (Joey Wipf) Iroquois, SD, 605-625-3123 • www.collinsprecast.com	•	•	•	•			•	•	•		•			
<b>Concrete Industries, Inc.</b> (Randy Schultz) Lincoln, NE, 402-434-1800 • www.concreteindustries.com			•	•		•	•	•				•	•	•
<b>Coreslab Structures (Kansas) Inc.</b> (Dennis Drews) Kansas City, KS, 913-287-5725 • www.coreslab.com											•	•	•	•
<b>Coreslab Structures (Missouri) Inc.</b> (Michael Saint) Marshall, MO, 660-886-3306 • www.coreslab.com	•		•	•			•	•	•				•	•
<b>Coreslab Structures (Omaha) Inc.</b> (Todd Culp) Bellevue, NE, 402-291-0733 • www.coreslab.com	•	•	•	•				•	•	•	•	•	•	•
<b>County Materials Corp.</b> Roberts, WI (Steve Hoelsing, 800-289-2569) • Bonne Terre, MO (Scott Boma, 573-358-2773) • www.countymaterials.com	•	•	•	•		•			•	•	•	•	•	•
<b>Crest Precast Concrete, Inc.</b> (Gary Mader) La Crescent, MN, 507-895-2342 • www.crestprecastconcrete.com	•	•	•								•		•	
<b>Crossland Prefab</b> (Rob Newsom) Columbus, KS, 620-429-1414 • www.crossland.com	•		•	•										
<b>Enterprise Precast Concrete, Inc.</b> Omaha, NE (Martin Lane) 402.895.3848 • Overland Park, KS (Dirk McClure) 913-312-5616 • www.enterpriseprecast.com	•	•	•											
<b>Fabcon</b> Savage, MN (Jim Houtman) 952-890-4444 Columbus, OH, Mahoney City, PA and Pleasanton, KS www.fabcon-usa.com				•							•	•		
<b>Forterra Building Products</b> (Joel Mich) Maple Grove, MN, 763-545-7473 • www.forterrabp.com					•						•	•	•	•
<b>Gage Brothers Concrete Products, Inc.</b> (Joe Bunkers) Sioux Falls, SD, 605-336-1180 • www.gagebrothers.com	•	•	•	•		•		•	•		•			•
<b>Mid America Precast, Inc.</b> (Rod Tanner) Fulton, MO, 573-642-6400 • www.midamericaprecast.com	•	•	•	•	•					•	•			
<b>Molin Concrete Products Co.</b> (Bob Clauson) Lino Lakes, MN, 651-786-7722 • www.molin.com	•		•	•		•			•					
<b>MPC Enterprises, Inc.</b> (Jeff Moehle) Mt. Pleasant, IA, 319-986-2226 • www.mpcent.com	•	•	•	•	•		•	•	•	•	•			
<b>PDM Precast, Inc.</b> (Adam Petersen) Des Moines, IA, 515-243-5118 • www.pdmprecast.com	•		•	•		•	•	•	•					
<b>Prestressed Casting Co.</b> (David Robertson) Springfield, MO, 417-869-7350 • www.prestressedcasting.com	•		•	•			•	•	•		•			
<b>Prestressed Concrete</b> (Chris Govert) Newton, KS, 316-283-2277 • www.prestressedconcreteinc.com	•		•	•			•	•	•		•	•	•	•
<b>SteinBauer LLC</b> (Paul Kleinsasser) Faulkton, SD, 605-324-3302 • www.steinbauerprecast.com	•	•	•	•			•	•			•		•	
<b>Stress-Cast Inc</b> (Jim Markle) Assaria, KS, 785-667-3905				•		•								
<b>Taracon Precast</b> (Mark Wipf) Hawley, MN, 507-380-9423 • www.taraconprecast.com	•		•	•		•	•	•	•		•			
<b>Wells</b> Wells, MN, Albany, MN and Maple Grove, MN (Spencer Kubat, 800-658-7049) • Grand Forks, ND (Mike Mortenson, 800-732-4261) • www.wellsconcrete.com	•	•	•	•		•		•	•		•		•	