

FACTORY MANUFACTURE OF UHPC BEAMS

- 180' LONG X 96" TOP/36" BASE 4" STEM X 84" HIGH
- 2- 6 BEAMS PER SHIFT

- MI-JACK FRIENDLY BUILDING
- FORM DESIGN/FABRICATION BY PRODUCER/SUB-SUPPLIER

- \$ 3.0 - 3.5 MM TURNKEY CAPEX BUDGET
- EQUIPMENT TO PRODUCE & DELIVER UHPC INTO FORMS
- 8 MONTHS FROM ORDER TO FIRST PRODUCTION

SKAKO
CONCRETE

Manufacturing Concrete
Products for the 21st Century



FACTORY MANUFACTURE OF UHPC BEAMS

DICTUMS OF FACTORY DESIGN & OPERATION

- SECONDS COUNT
- AUTOMATIC PROCESS CONTROL: FINE MATERIALS/ACCURACY/SPEED
- NO COLD JOINTS
- MAKE IT EASY & SAFE TO CLEAN & MAINTAIN..THEN IT WILL BE DONE!

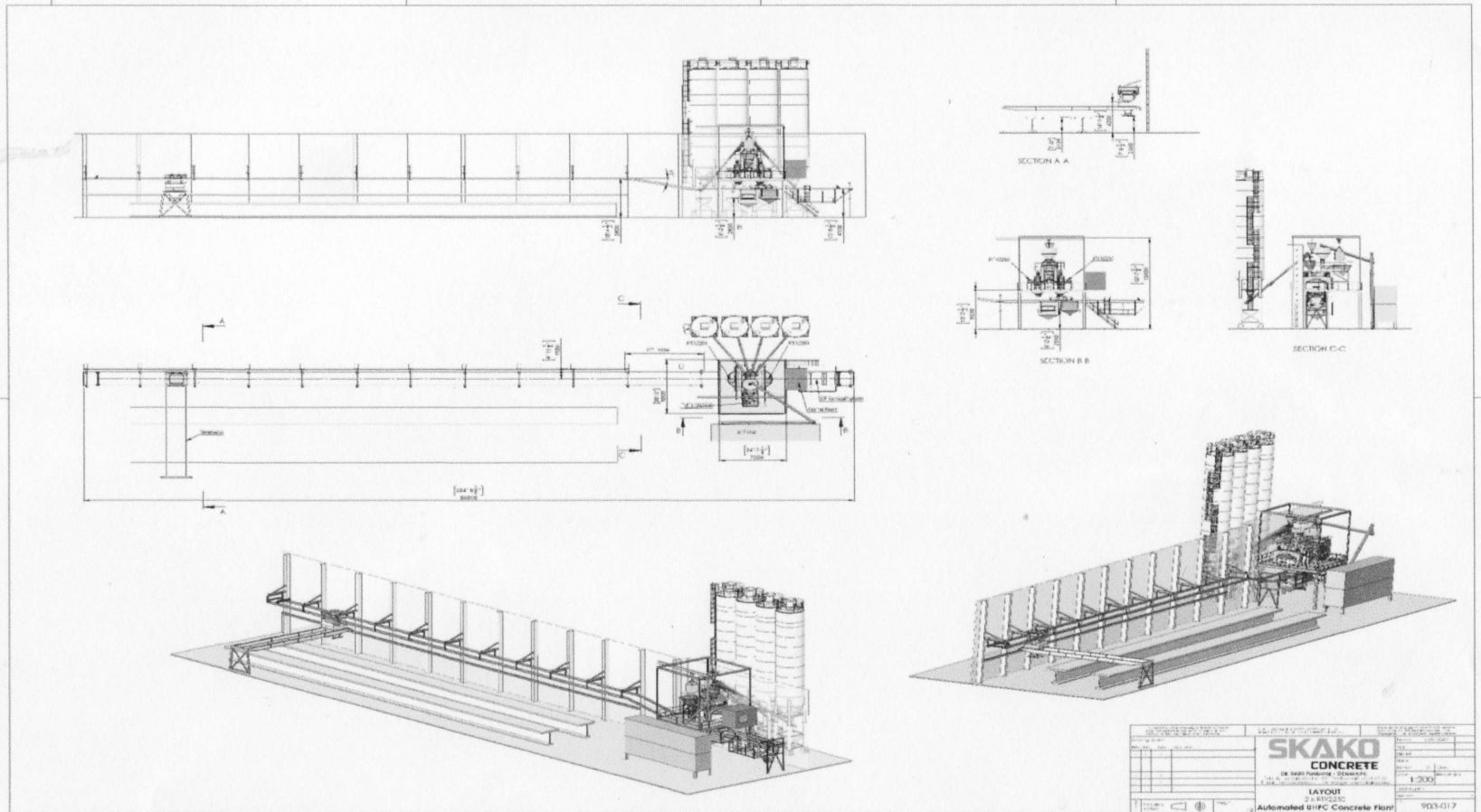


KEY EQUIPMENT COMPONENTS UHPC FACTORY OPERATION

- CONTINUOUS WEIGHT-PROPORTIONING OF MATERIALS: “LOCK & LOAD”
- MULTI-DIMENSIONAL, HIGH-INTENSITY MIXING
- RAPID AND RELIABLE UHPC DELIVERY INTO FORMS
- FULLY AUTOMATIC OPERATION : “HANDS OFF”



THE FACTORY



CONTINUOUS PROPORTIONING OF MATERIALS

Holding Batching Tolerances Depend On Choice of Proportioning Devices

Cementitious

Steel Fiber

ICE

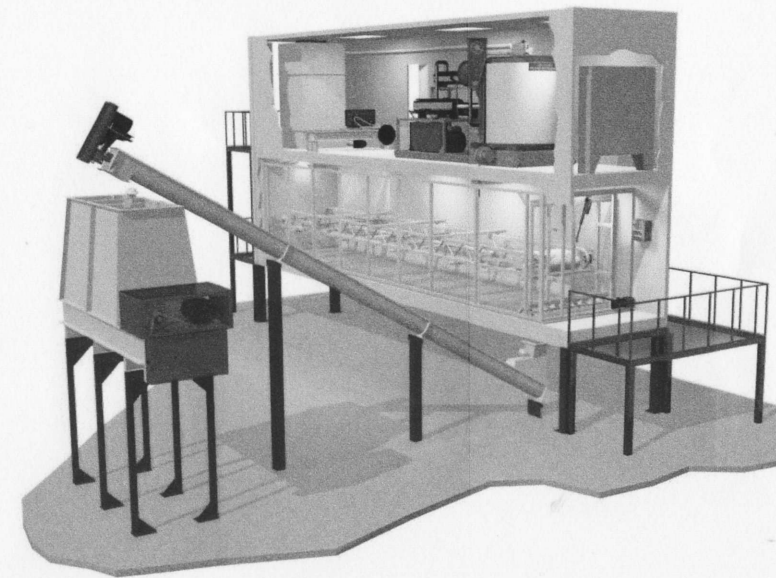
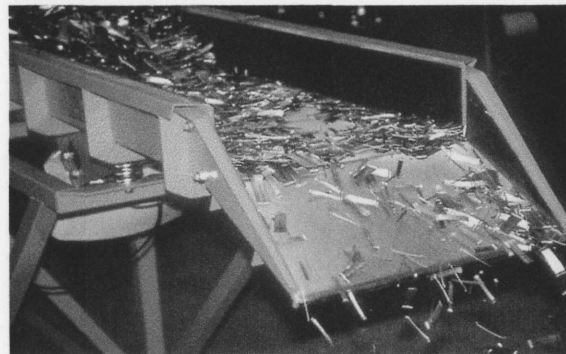
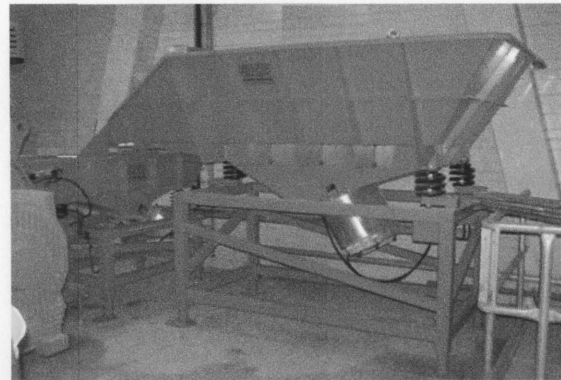


FINE PROPORTIONING SCREW CONVEYOR

CEMENT, FLY ASH, SILICA

- 1 MAIN SCREW CONVEYOR FOR COARSE PROPORTIONING
- 2 UNDERLYING MINOR SCREW CONVEYOR FOR FINE PROPORTIONING

OPTIONAL:
PNEUMATIC GATE CLOSING
AFTER FINE PROPORTIONING

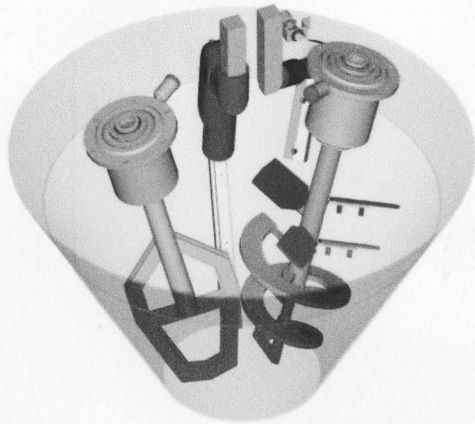
- FINE PROPORTIONING
- HIGH ACCURACY
- BIG SAVINGS



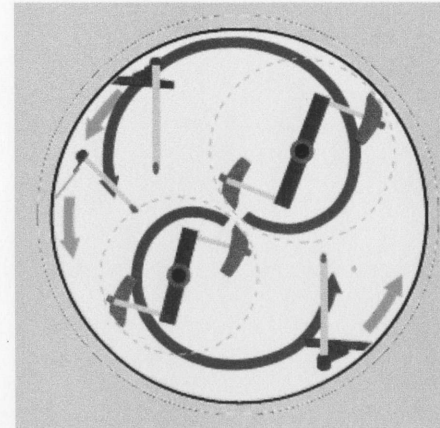
MULTI-DIMENSIONAL, HIGH-INTENSITY MIXING

COUNTER-VORTEX VS COUNTER-CURRENT (PLANETARY)

ROTOCONIX



ATLANTIS



7

RAPID & RELIABLE UHPC DELIVERY INTO FORMS

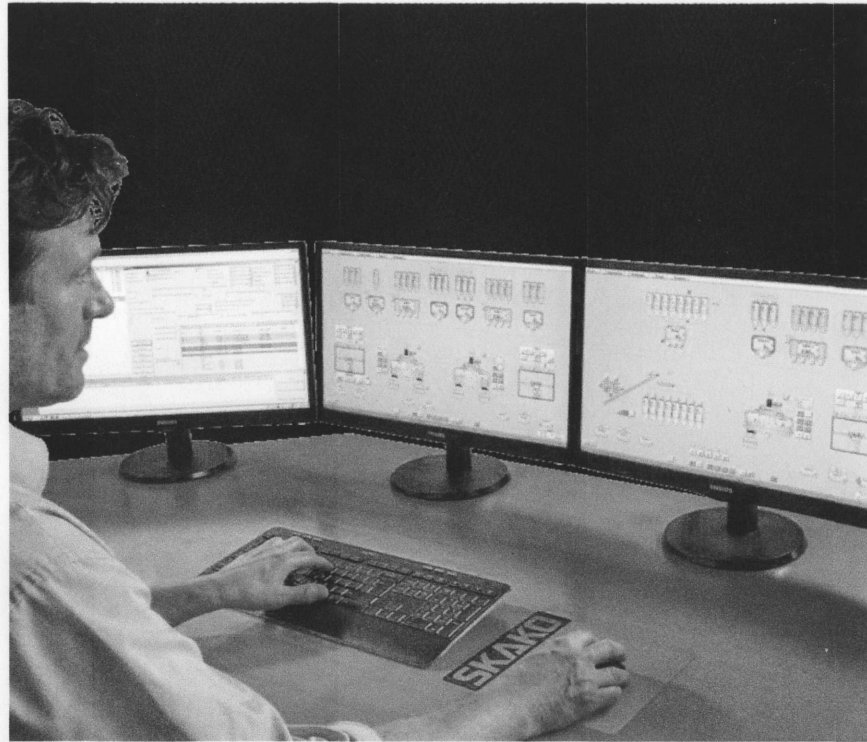


SKAKO
CONCRETE

Manufacturing Concrete
Products for the 21st Century



FULLY AUTOMATIC OPERATION: "HANDS OFF"



Milan, Italy

UHPC Concrete Mixing

